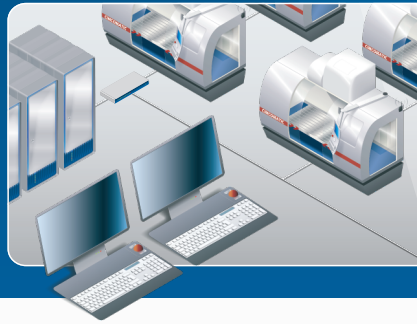
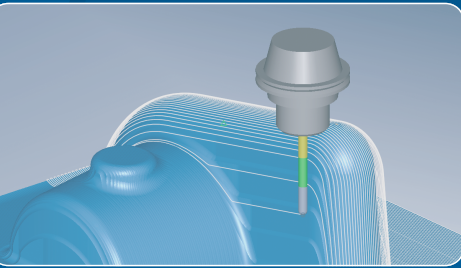


www.cimco-software.com

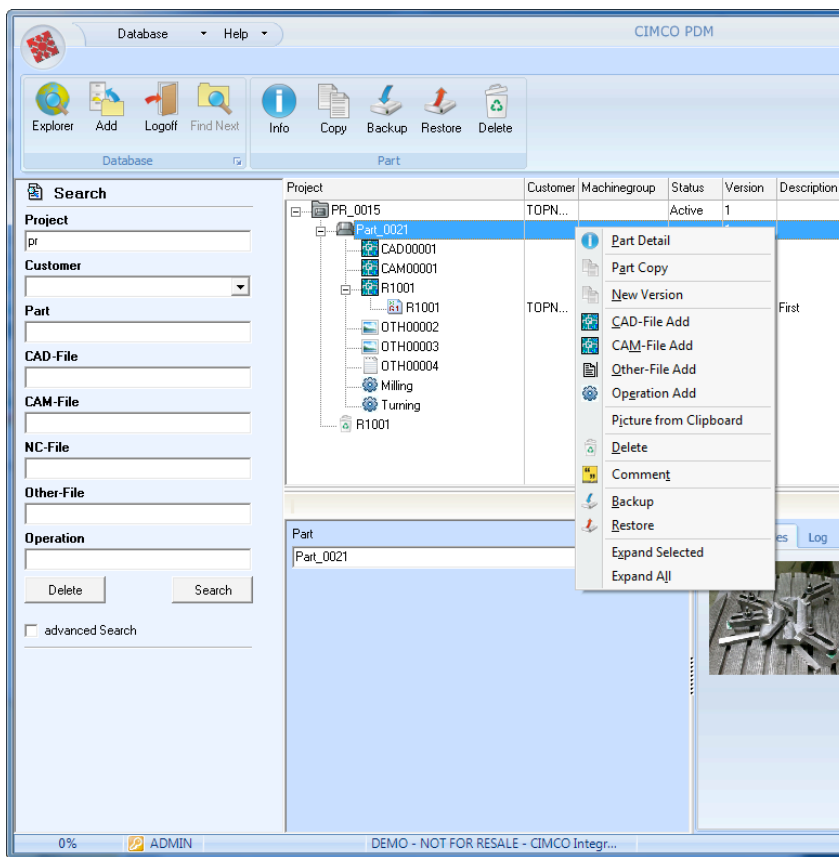
CIMCO PDM Getting Started



 **CIMCO**
Integration

PDM

CIMCO PDM Getting Started



CIMCO PDM Getting Started

Welcome to the CIMCO PDM Getting Started Guide. This guide will provide you with a basic understanding of what CIMCO PDM is and how it is used.

What is CIMCO PDM?

CIMCO PDM is a data management tool for organizing and managing CAM-files and related production documents. It is highly customizable and can be configured exactly to match your existing production workflow.

With CIMCO PDM you get all the functionality you would expect from a modern information management system and then some. It allows you to gather, structure and centralize your production documents. Transfer production documents e.g. setup sheets, tool lists, pictures and other essential information directly to the shop floor. Manage permissions for users and groups and centralize the backup and recovery of documents from previous versions.

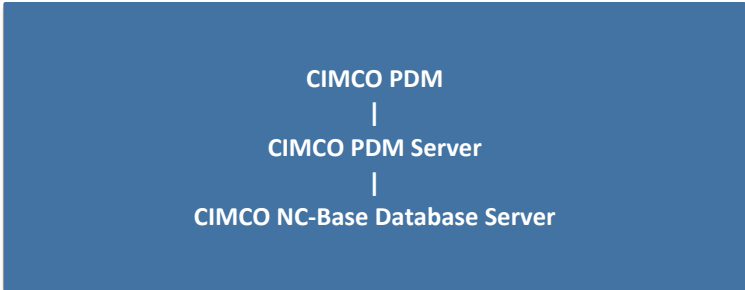
Structuring production documents in CIMCO PDM works similar to how you structure files in e.g. Microsoft Windows - with folders and sub-folders. CIMCO PDM, however, allows you to specify exactly what types of files can be added to your folders and who has permission to do so. This ensures that your files will always be placed in the right folders in your structure.

CIMCO PDM, however, works with the concept of “levels” instead of folders. Levels can contain sub-levels and production documents can be associated with levels in several ways, such as physically copying or simply linking to documents in their existing location on a harddisk or network share. You can associate all types of production documents to a level such as images, tool lists, setup sheets, inspection notes, etc. or create them automatically by letting CIMCO PDM analyze the data contained in e.g. your CNC program.

CIMCO PDM has a lot more to offer than what has been outlined above. Its flexible and highly configurable nature makes it adaptable to any existing setup or workflow.

Installation and first run

Under the hood CIMCO PDM utilizes the powerful CIMCO NC-Base Database Server and CIMCO PDM Server as an intermediate layer for handling the communication between CIMCO PDM and the NC-Base Database Server.



In order to get CIMCO PDM up and running you need to install both CIMCO PDM and CIMCO NC-Base Database Server. Both are available for download at www.cimco.com, but require a valid activation keyfile to run. CIMCO NC-Base Database Server is installed as part of CIMCO Software Version 6.

Once you have completed installation and activation of CIMCO PDM and CIMCO NC-Base Database Server you need to start both the NC-Base Database Server and CIMCO PDM Server. It is important you do this in the right order as described below:

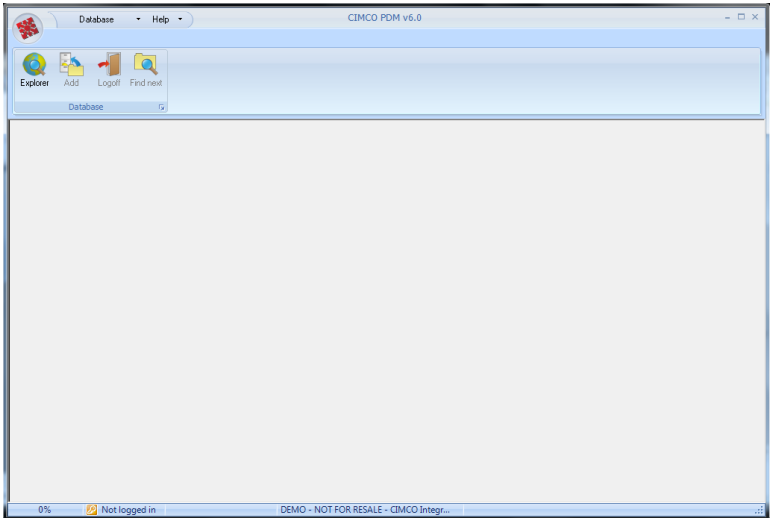
Note: In Windows 7 and Vista you need to right-click and select “Run as Administrator”.

1. Navigate to the folder CIMCO V6, open Database Server and click the “Start” button to start the server.
2. Navigate to the folder CIMCO PDM, open CIMCO PDM Server and click “Start Server”.

3. Run CIMCO PDM

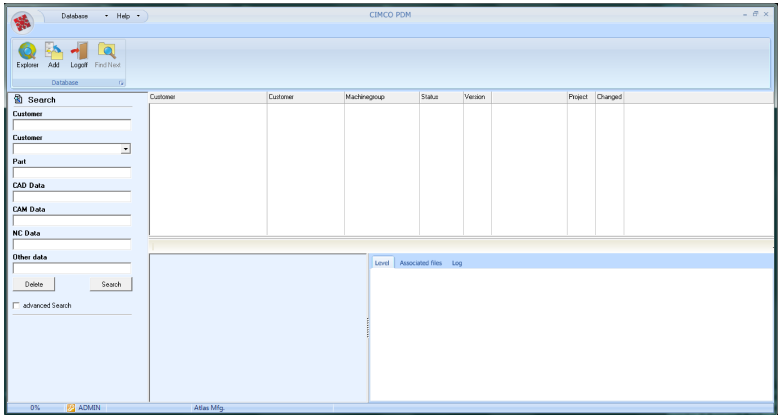
The first time you run the above you will be prompted for an activation keyfile. If you do not have a keyfile please contact your local reseller or CIMCO Integration directly.

When you run CIMCO PDM you will be presented with the following screen. The upper part contains the “Database” toolbar and menus and the lower part contains a blank area reserved for the PDM “Explorer”.



1. Click on “Explorer” in the “Database” toolbar
2. Logon as “ADMIN” and leave the password field empty

If logon was successful you will see the following screen and can start using CIMCO PDM.



Program Overview

In CIMCO PDM the screen is divided into two areas containing the “Menus and toolbars” and the “Explorer”. The topmost area contains the menus and toolbars. These are dynamic and change depending on what is selected in the Explorer. The large area underneath contains the Explorer with its Search panel (left), Explorer View (top, right) and Database Preview (bottom, right).

Menus and toolbars



CIMCO PDM Icon

Clicking this opens a small window with a shortcut to the Explorer and Database Configuration.

Database and Help (top menu)

Positioned at the very top of the screen the “Database” and “Help” menus provide easy access to adding new projects, managing customers, accessing the Online Help and the About dialog.



Explorer

By clicking the “Explorer” icon you can logon to the Explorer. In the Logon dialog you first select the user you want to logon with and then supply the correct password. The Explorer will open once logon is successful.



Add

By clicking the “Add” icon you can add a new root-level entry to the Explorer View. By default the root-level entry is called “Project”, but this can easily be re-configured if you have different naming requirements.

Clicking “Add” by default brings up the Project dialog where Project name, Customer and Status is entered. In the Database Configuration under Level Settings you can add more database fields if needed and these will show in the Project dialog as well.



Logoff

Clicking the “Logoff” icon closes the Explorer and logs off the user.



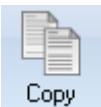
Find next

If a search, using the Search panel, results in more than one result, the “Find next” icon will show the next result in the Explorer View. That way you can easily move through your search results.



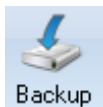
Info

Clicking the “Info” icon brings up a dialog with the information and database fields for the level or document selected in the Explorer View. This can also be achieved by double-clicking a level in the Explorer View. You can change the information if needed and save/close the information by clicking the “OK” button.



Copy

Clicking the “Copy” icon makes a copy of the level or document selected in the Explorer View. Insert the copy by right-clicking the level in the Explorer View to which it should be inserted and click “Insert”.



Backup

Clicking the “Backup” icon makes a backup of the selected level and its sub-levels in the Explorer View. Verify that the backup has been performed by clicking the “Restore” icon. This brings up the Restore dialog with a list of the backups.



Restore

Clicking the “Restore” icon opens the Restore dialog. This shows the backups that have been created for the selected level in the Explorer View. Select the backup you wish to restore and click “Restore”.

Send

Clicking the “Send” icon transfers the selected document in the Explorer View to a predefined machine. Machines can be configured in the Database Configuration dialog.

Lock / Un-lock

Clicking the “Lock” or “Unlock” icon locks/unlocks the selected level or document for editing by other users.



Delete

Clicking the “Delete” icon deletes the selected level or document and everything associated with it.

Explorer

Search panel

The Search panel is positioned in the left side of the Explorer. Fill out any or all of the fields available and click the “Search” button. The search results will show in the Explorer View and you can navigate through them using the “Find next” icon in the toolbar. Click the “Delete” button to clear all the search fields.

The available search fields can be customized in the Database Configuration dialog. The “Advanced Search” checkbox at the bottom shows the date fields for searching by dates or time periods.

Explorer view

The Explorer View is positioned in the top-right side of the Explorer. The first column in the Explorer View shows your root-level entries. By default these are called Projects and can be expanded by clicking the small (+) icon next to a project name. This reveals any sub-level documents and these can again have sub-level documents beneath them. There is no limit as to how many levels can exist.

The Explorer View also contains a number of additional columns with details for the documents in the first column e.g. Customer name, Machine group and Status. The columns shown can be configured in the Database Configuration dialog.

Double-clicking a level in the Explorer View brings up a dialog with the information and database fields for that level. Double-clicking a document opens it in an external program e.g NC-programs open in CIMCO Edit while CAD files open in Mastercam - this is completely configurable.

Right-clicking a document in the Explorer View brings up a contextual menu with relevant functions for that document. Many of the functions in the contextual menu have already been explained above.

Database Preview

The Database Preview is positioned in the bottom-right side of the Explorer. It provides a dynamic preview of the selected level or document in the Explorer View. The amount of information depends on the selected level or document in the Explorer View.

The left side of the Database Preview shows the related database fields and information. The right side shows a preview of the contents of the selected document. It also provides an overview of the documents associated with the selected document (documents in sub-levels). Finally it provides a Log with history tracking of changes to the particular document.