

# CIMCO PDM

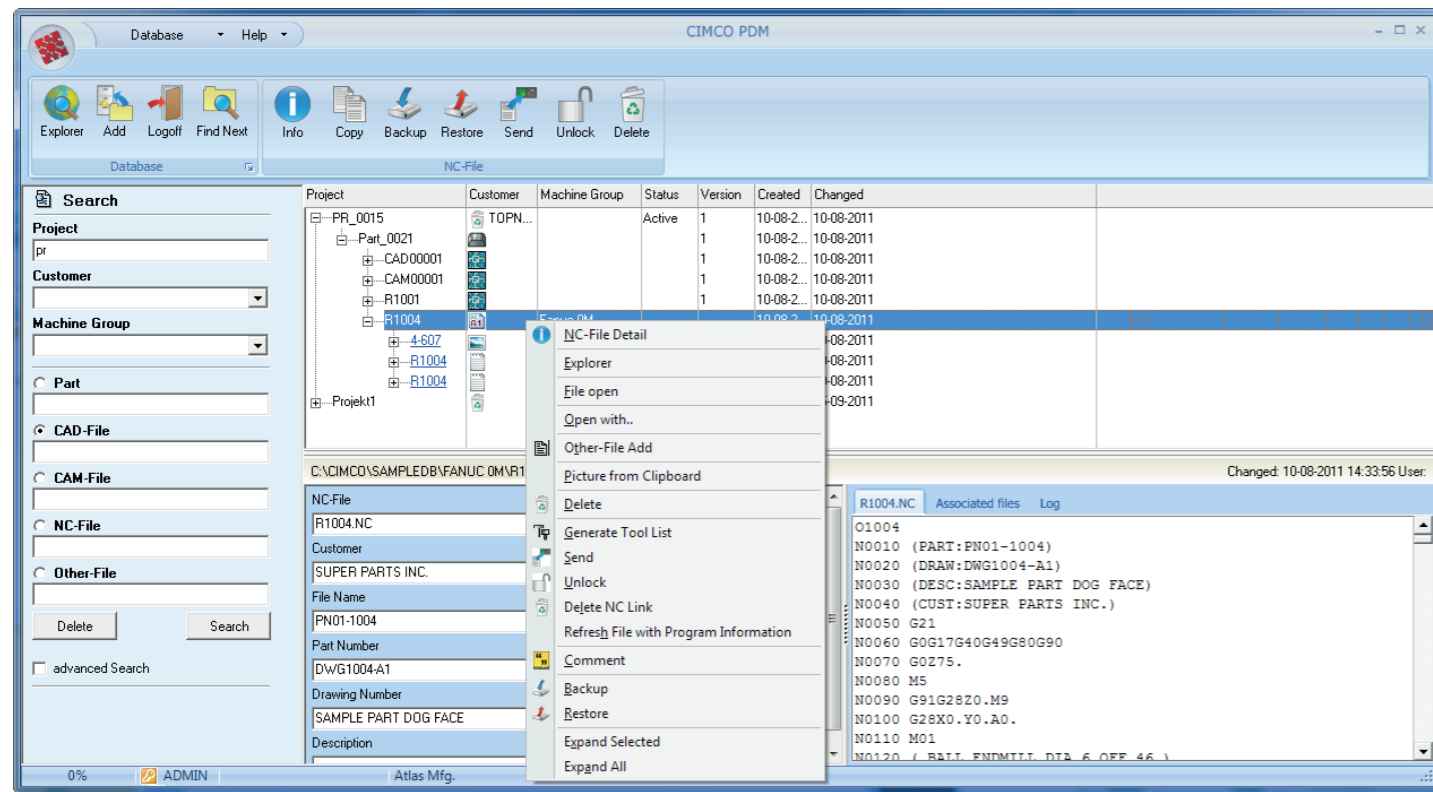
## Production Data Management

The screenshot displays the CIMCO PDM software interface. The main window is titled "CIMCO PDM" and features a menu bar with "Database" and "Help". Below the menu bar is a toolbar with icons for Explorer, Add, Logout, Find Next, Info, Copy, Backup, Restore, and Delete. The interface is divided into several sections:

- Search Panel (Left):** Contains fields for Project, Customer, Part, CAD-File, CAM-File, NC-File, Other-File, and Operation. It also includes "Delete" and "Search" buttons and an "advanced Search" checkbox.
- Project Tree (Middle-Left):** Shows a hierarchical view of a project named "PR\_0015". The tree includes folders for "Part" (containing CAD00001, CAM00001, R1001, OTH00002, OTH00003, OTH00004, Milling, and Turning) and "R1001".
- Data Table (Middle-Right):** A table with columns: Project, Customer, Machinegroup, Status, Version, Description, Drawingnumber, Created, and Changed. The table contains data for various parts and operations.
- Context Menu (Overlaid):** A menu is open over the "Part\_0021" entry in the tree, listing actions such as Part Detail, Part Copy, New Version, CAD-File Add, CAM-File Add, Other-File Add, Operation Add, Picture from Clipboard, Delete, Comment, Backup, Restore, Expand Selected, and Expand All.
- Database Configuration Dialog (Bottom-Left):** A dialog box titled "Database Configuration" with a tree view on the left showing "Client Configuration", "Search Fields", "External Applications", "Level Settings", "Machines", "User Groups", and "Database Configuration". The "External Applications" section is expanded, showing fields for "Application 1", "Application 2", and "Application 3". Below this is a "Level Specific Applications" section with six rows, each containing a name field and a dropdown menu.
- Image (Bottom-Right):** A photograph of a metal part being machined on a lathe, showing a cutting tool and a chip being removed.

# CIMCO PDM

## Production data management



## CIMCO PDM

CIMCO PDM was developed as an extension to CIMCO NC-Base. It allows you to not only manage all of your component programs, but also to create a structure containing every file needed during your production process, from the project and your root data to your CAM-file and all related documents.

This makes working even faster and more efficient because the CNC programmer and machinist have access to all necessary files and documents at one glance.

CIMCO PDM is a Production Data Management program, which stores and organizes all your CNC programs, CAD/CAM files, setup sheets, tool lists, images and all other documents to be easily retrieved, reviewed, and edited from any point in the production process. The shop floor becomes totally digital, and CIMCO PDM integrates seamlessly with other CIMCO software like CIMCO DNC-Max, CIMCO MDC-Max, CIMCO NC-Base, and CIMCO Edit, including well known and proven features like Backplot, Auto Receive, Remote Request, and many more, allowing you flexibility and control anywhere in your work shop.

## Information Management

In order to reach your high goals in productivity and quality today and in the future, it is crucial that the correct items of information and data reach the right people and equipment as efficiently as possible.

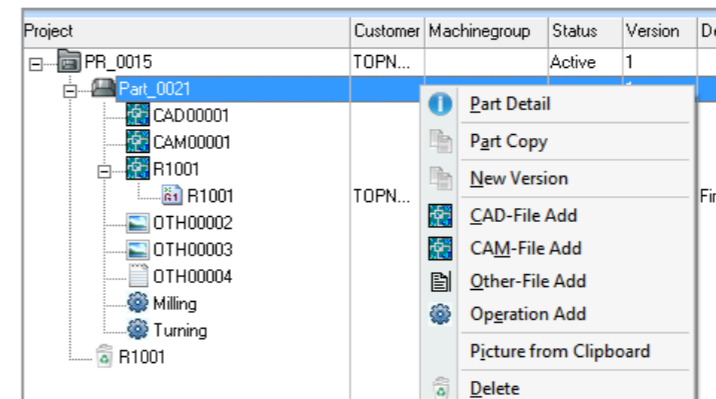
Why would you want to only send CNC programs to the shop floor if you could also transfer setup sheets, tool lists, pictures, and other essential information needed for the reliable production of a part? This information can be opened on a computer in your network on which the CIMCO PDM client is installed.

CIMCO PDM and CIMCO NC-Base allow programmers and production staff to compose virtual folders – called levels – containing all the data necessary for machinists, operators, quality staff and everybody else responsible for the finished part.

CIMCO PDM is the management tool to organize and manage your CAM-files and related production documents most effectively by utilizing a reliable and fast relational SQL database. CIMCO PDM and CIMCO NC-Base form your center of production developed to be used by specialists in the programming department and on the shop floor.

## Production Data Management

Associate all types of production data with your CNC programs to minimize mistakes and scrap. You may associate files created outside CIMCO Edit such as tool lists, setup sheets, inspection notes, etc., or have them created automatically from data contained in your CNC program. You may also launch external applications for viewing or editing of all file types.



## With CIMCO PDM you get

- A reliable and fast relational SQL database
- unlimited number of files and documents
- unlimited file size
- virtual folders to store NC files directly from machines
- user-configurable database and file structure
- free choice of launching of applications for viewing and editing
- automatically created production documents from NC file data
- extensive and flexible user and group permission administration
- seamless integration with
  - CIMCO NC-Base
  - CIMCO Edit
  - CIMCO DNC-Max

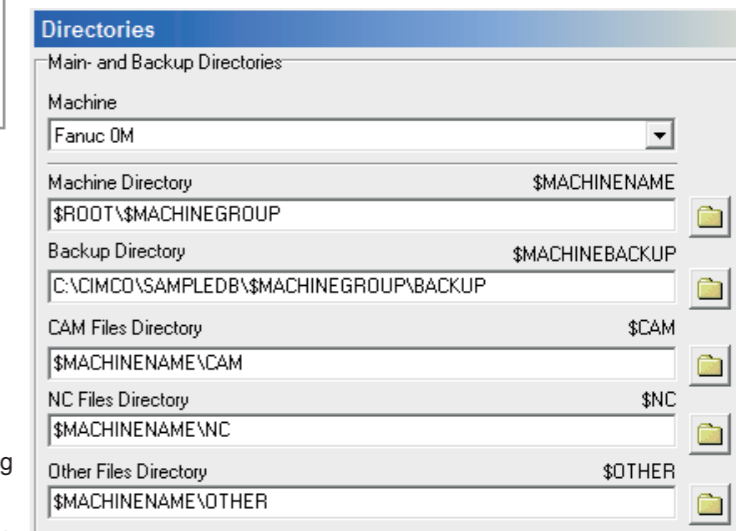
## User Management

Controlling who can access and modify information is a critical component in any information management system. CIMCO PDM achieves this by using a highly flexible user/group permission system that enables the administrator to specify the level of access for each user, for example who is allowed to view, modify, approve or delete files, etc., but also who is authorized to backup/restore, send/receive, approve, or associate files - and to which machine group the authorization applies.

## Levels

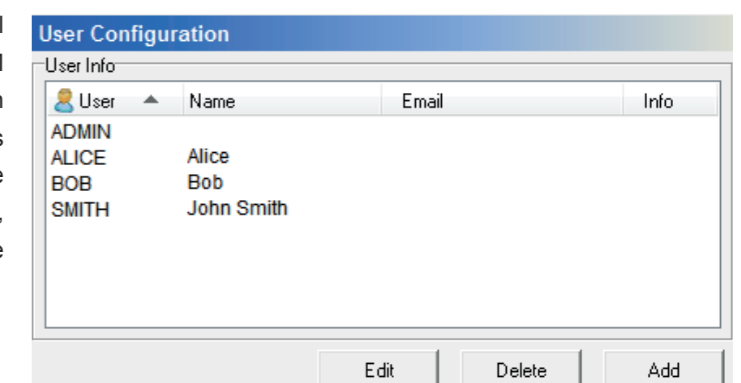
CIMCO PDM works with the concept of levels instead of folders. Levels can contain sub-levels, and production documents can be associated with levels in several ways, such as physically copying or simply linking to documents in their existing location on a hard disk or network share. You can associate all types of production documents to a level, such as images, tool lists, setup sheets, inspection notes, etc., or create them automatically by letting CIMCO PDM analyze the data contained in e.g. your CNC program.

In short, with CIMCO PDM you get all the functionality you would expect from a modern information management system and then some. CIMCO PDM allows you to gather, structure and centralize your production documents, and its flexible and highly configurable nature makes it adaptable to any existing setup or workflow.



## System Integration

CIMCO PDM is fully integrated with CIMCO NC-Base and CIMCO DNC-Max. CIMCO's flagship DNC networking solution allows operators to request and save CNC programs directly from the machine control.



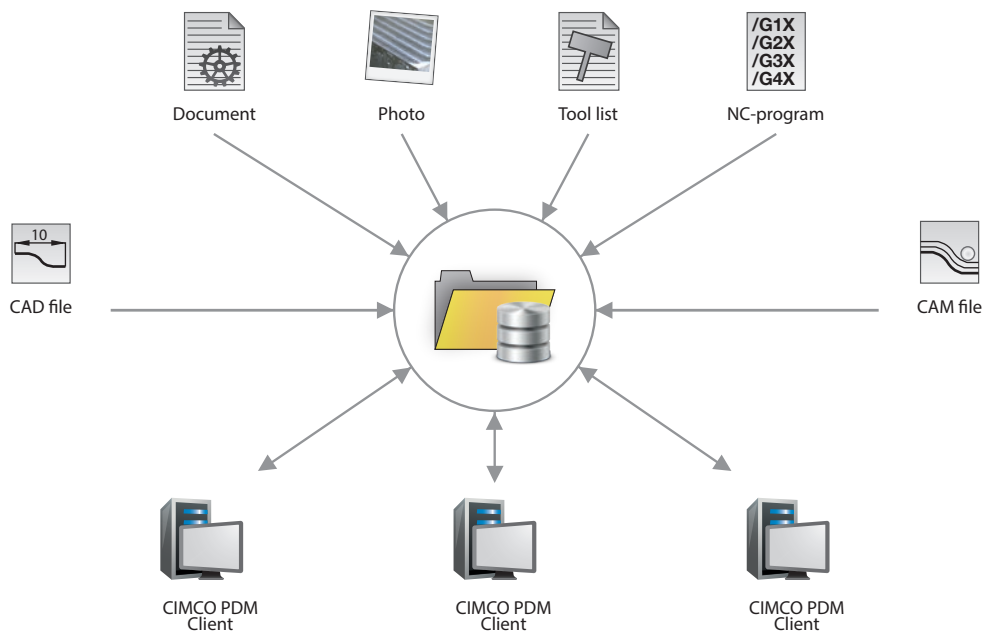
# CIMCO PDM

## Production Data Management

Why would you only want to send CNC programs to the shop floor if you could also transfer setup sheets, tool lists, pictures and other essential information needed for the reliable production of a part. CIMCO PDM was designed for easily organizing and structuring the

storage and retrieval of all production data. This means facilitating and extensively automating the back-and-forth flow, naming, verification, and storage of programs, but also storing and linking associated digital documents, rendering the shop floor virtually paperless.

### Organizing and structuring the storage and retrieval of production data



Reseller

#### Europe

CIMCO A/S  
Copenhagen  
Denmark

Tel: +45 45 85 60 50  
Fax: +45 45 85 60 53

Web: [www.cimco.com](http://www.cimco.com)

#### CIMCO Americas

CIMCO Americas, LLC  
651 S Sutton Road, Suite 276  
Streamwood, IL 60107

Tel: +1 704 644 3587  
Fax: +1 704 943 0514

E-mail: [info@cimco.com](mailto:info@cimco.com)

